

# MoboDrive ST

INTEGRATED DRIVE SYSTEMS for Indoor Mobile Robots and Machinery

MoboDrive ST is a family of compact and highly integrated Steered-Traction units designed for highly maneuverable AMRs and AGVs. It is engineered with a steering actuator featuring endless rotation, a high-torque traction unit, redundant encoder systems, and robust motor control electronics.

Seamlessly integrates into robots across diverse industries such as manufacturing, logistics, and warehousing, security and surveillance, pharma and healthcare.

Comprehensive support is provided across selection, acquisition, and deployment, ensuring seamless integration and optimal performance.

# MoboDrive ST

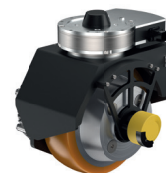
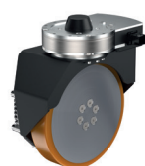
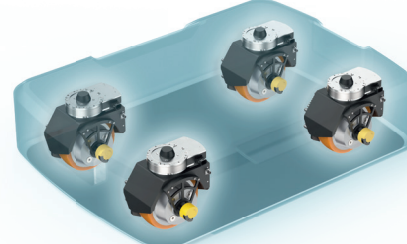
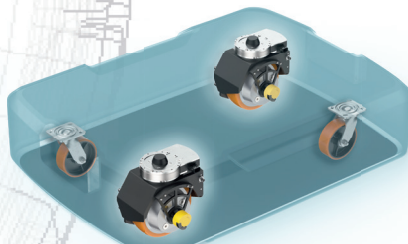
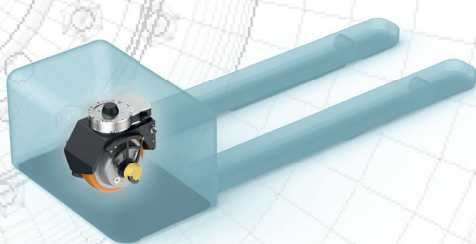
## COMPACT AND INTEGRATED STEERED-TRACTIONS UNIT

### Highlights:

- Highly integrated and compact design
- Motor control electronics integrated
- Turning diameter: 268 mm
- Steering torque max: 250 Nm
- Radial load capacity: Up to 1000 kg
- Integrated slip ring system for endless rotation

### Drive configuration:

- Pallet mover with single traction wheel
- Omnidirectional mobile platforms with 2 or 4 ST units and active/passive castors
- Other multi-wheel configurations possible



### Technical specification

#### ST-500-225

#### ST-1000-225

#### ST-1200-225/S

Max. load capacity	500 kg	1000 kg	1200 kg
Wheel size	225 x 50 mm	225 x 50 mm	225 x 70 mm
Traction torque	Up to 120 Nm	Up to 120 Nm	Up to 500 Nm
Traction speed	Up to 2,3 m/s	Up to 2,3 m/s	Up to 2,0 m/s
Max. steering torque	250 Nm	250 Nm	250 Nm
Supply voltage	24-60 V	24-60 V	24-60 V

### Safety & Communication:

- Field bus communication options: CAN, EtherCAT, ProfiNET
- Integrated multiple and redundant encoder systems for control and safety supervision
- Safe redundant encoder systems ensure precision and reliability
- Robust motor control electronics for enhanced safety
- Standard interfaces for seamless integration into vehicle architecture

**Right partner for Mobile Robotic manufacturers of any size**

MOBOTIC GmbH    📍 Valentin-Linhof Straße 8, 81829 Munich, Germany

✉ info@mobotic.de    ☎ +49 160 400 56 87    🌐 <https://www.mobotic.de>